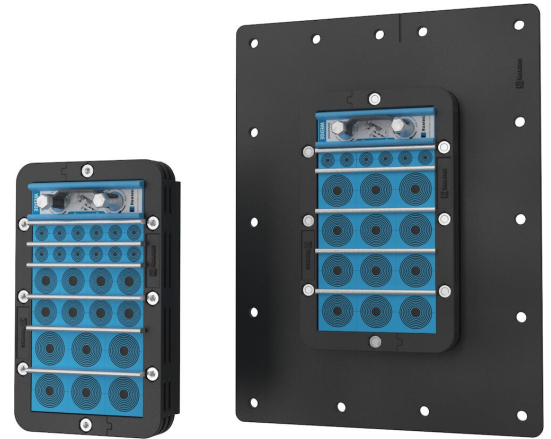




# Pasamuros Roxtec C KFO

Sello para cables ligero para envolventes

El pasamuros Roxtec C KFO es una solución de sellado de cables para diversos tipos de envolventes, donde es importante mantener el peso al mínimo. El marco está hecho de material compuesto (PA) y está disponible con una sola apertura y con o sin ala.



- Resistente a roedores
- Ligero
- Perfecto para renovaciones
- Fácil de mantener e inspeccionar

## Características del producto



IP/UL NEMA

## Estructura de instalación



Armarios envolventes & prefabricados

## Calificaciones y certificados

### Estanquidad

- IP 55

## Dimensiones del marco

mm/kg

Las variantes de marcos que figuran a continuación son una selección limitada. Para ver la gama completa de marcos y configuraciones, visite [roxtec.com](https://www.roxtec.com).

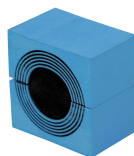
Título	Aperturas de marcos	Espacio útil de sellado	Dimensiones externas WxHxD	Dimensiones de abertura w x h	Peso	N.º de art.
C KFO 6x1	1	120 x 180	159 x 260 x 30	123(-2) x 223	0.6	CKF0000060059
C KFO 6x1 WITH FLANGE	1	120 x 180	319 x 420 x 30	170(+5/-5) x 270(+5/-5)	1.4	CKF1000060059
C KFO COUNTER FRAME					0.39	KFC0000100011

## Datos de los componentes de sellado

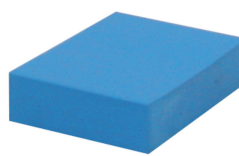
### Componentes de sellado



C Wedge y Wedgekit



Módulo CM con Multidiameter™



Módulo de compensación sólido CM



Placa de separación C



Lubricante Roxtec

Para obtener información detallada, visite [roxtec.com](https://www.roxtec.com).



The product information provided by Roxtec does not release the purchaser of the Roxtec system, or part thereof, from the obligation to independently determine the suitability of the products for the intended process, installation and/or use.

Roxtec gives no guarantee for the Roxtec system or any part thereof and assumes no liability for any loss or damage whatsoever, whether direct, indirect, consequential, loss of profit or otherwise, occurred or caused by the Roxtec systems or installations containing components not manufactured by an authorized manufacturer and/or occurred or caused by the use of the Roxtec system in a manner or for an application other than for which the Roxtec system was designed or intended.

Roxtec expressly excludes any implied warranties of merchantability and fitness for a particular purpose and all other express or implied representations and warranties provided by statute or common law. User determines suitability of the Roxtec system for intended use and assumes all risk and liability in connection therewith. In no event shall Roxtec be liable for indirect, consequential, punitive, special, exemplary or incidental damages or losses.

The Roxtec products are offered and sold in accordance with the conditions of the Roxtec General Terms of Sales. The latest version of the Roxtec General Terms of Sales can be downloaded from <https://www.roxtec.com/en/about-us/about-roxtec/general-terms-of-sales/>

We reserve the right to make changes to the product and technical information without further notice. Any errors in print or entry are no claims for indemnity. The content of this publication is the property of Roxtec International AB and is protected by copyright.

This document was generated on: 2024-04-23